



Windows Driver Installation Manual For Windows Embedded XP

Rev. 1.00

■ Table of Contents

1. Manual Information.....	3
2. Windows Driver Preparation	3
3. Windows Driver Installation and remove	4
3-1 Installation	4
3-2 Remove	13

1. Manual Information

This Manual provides information on installation of the printer's Windows Driver in Windows Embedded XP.

2. Windows Driver Preparation

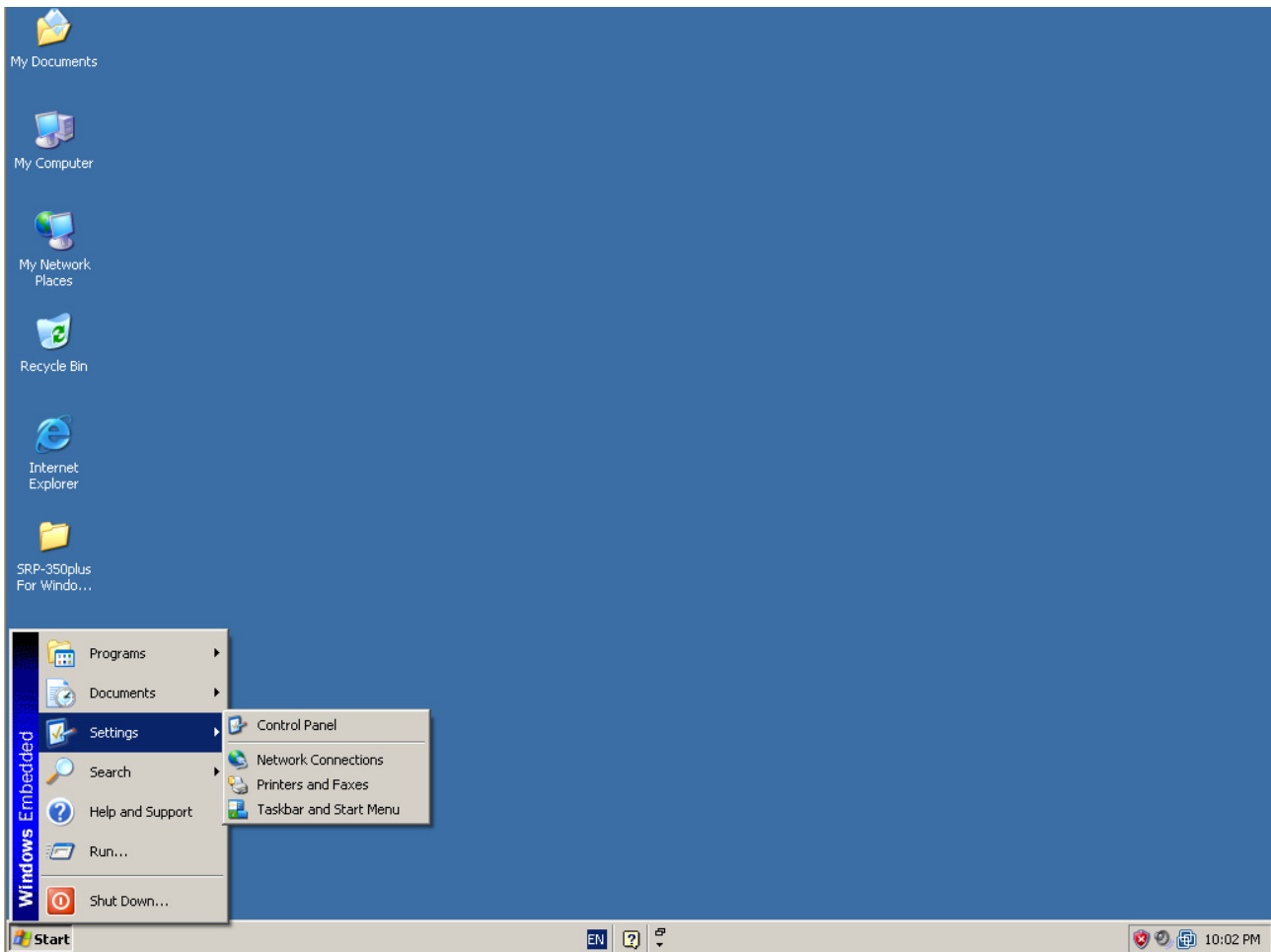
The Windows Driver is included in the enclosed CD, and Latest file versions can be downloaded from the BIXOLON website.

(www.bixolon.com)

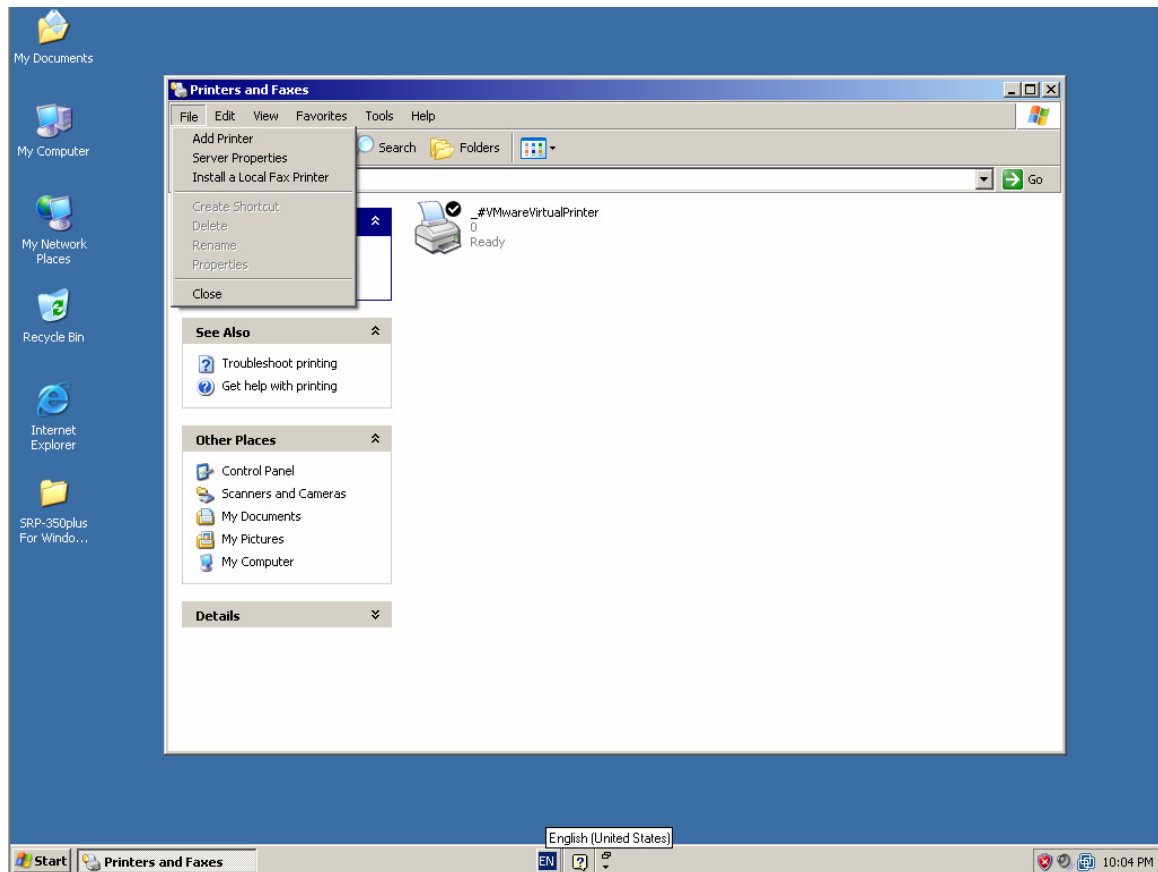
3. Windows Driver Installation and Remove

3-1 Installation

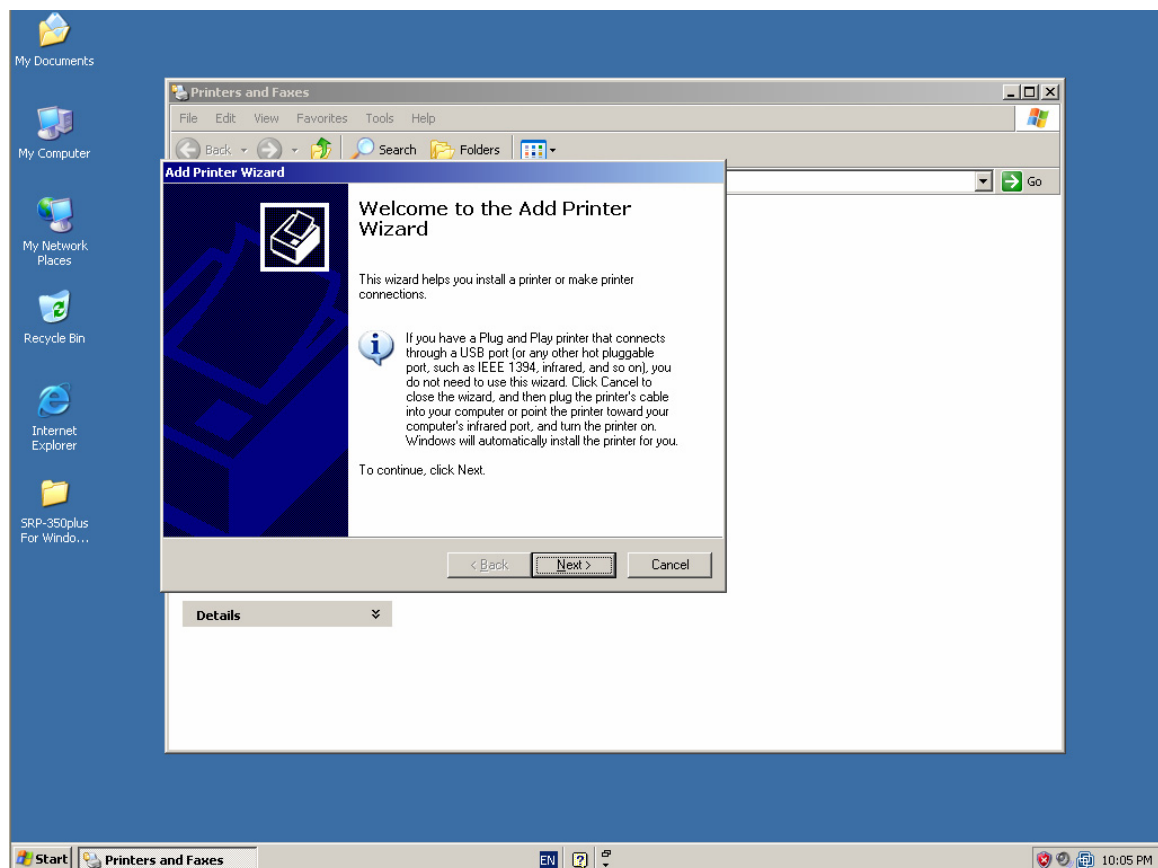
1) Click Start -> Settings -> Printer and Faxes.



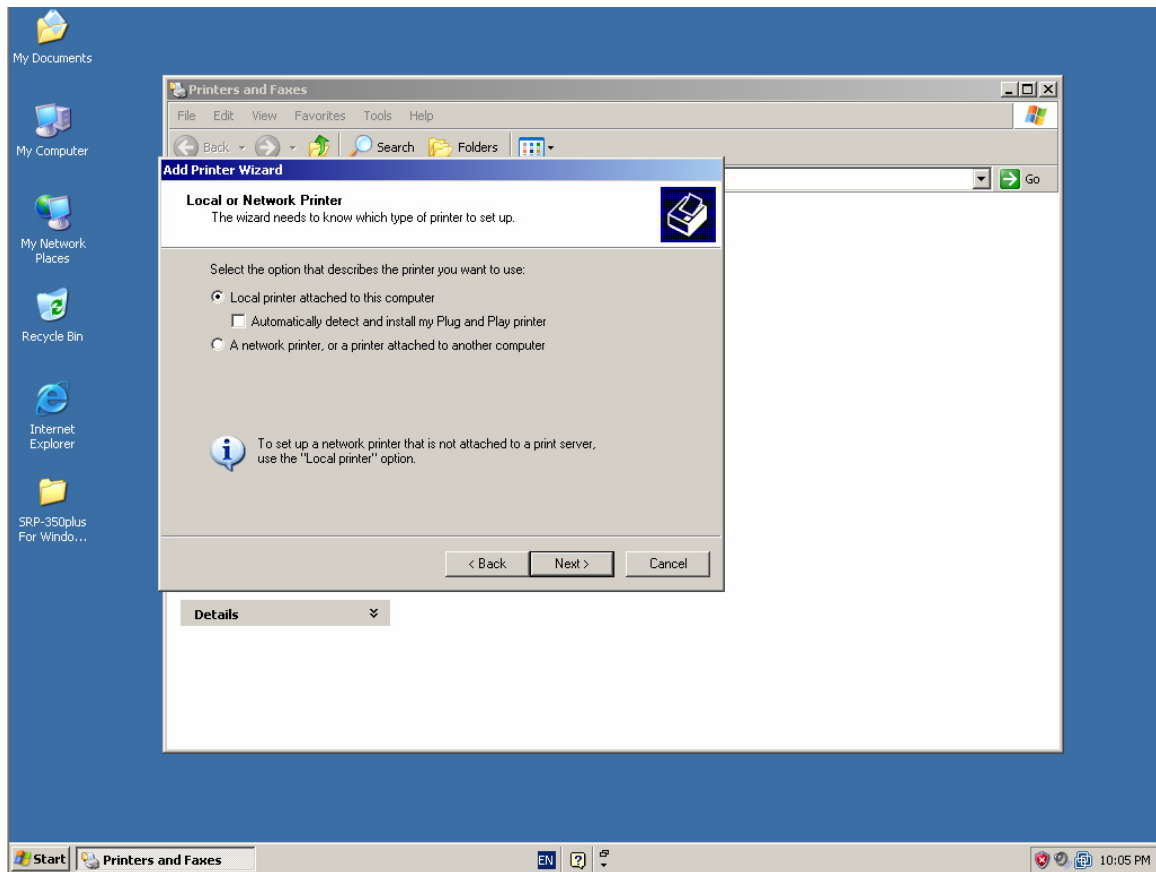
2) In the “Printers and Faxes”, execute “Add Printer Wizard”.



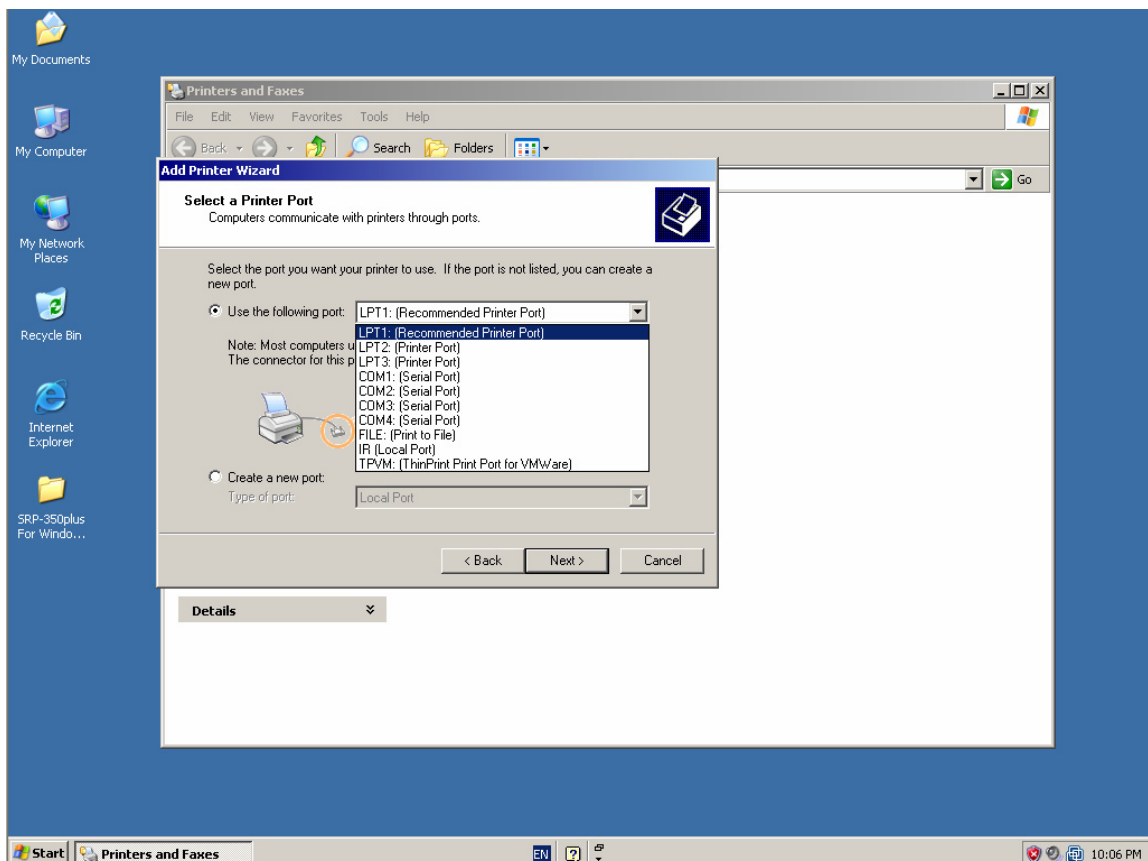
3) Click the “Next” button.



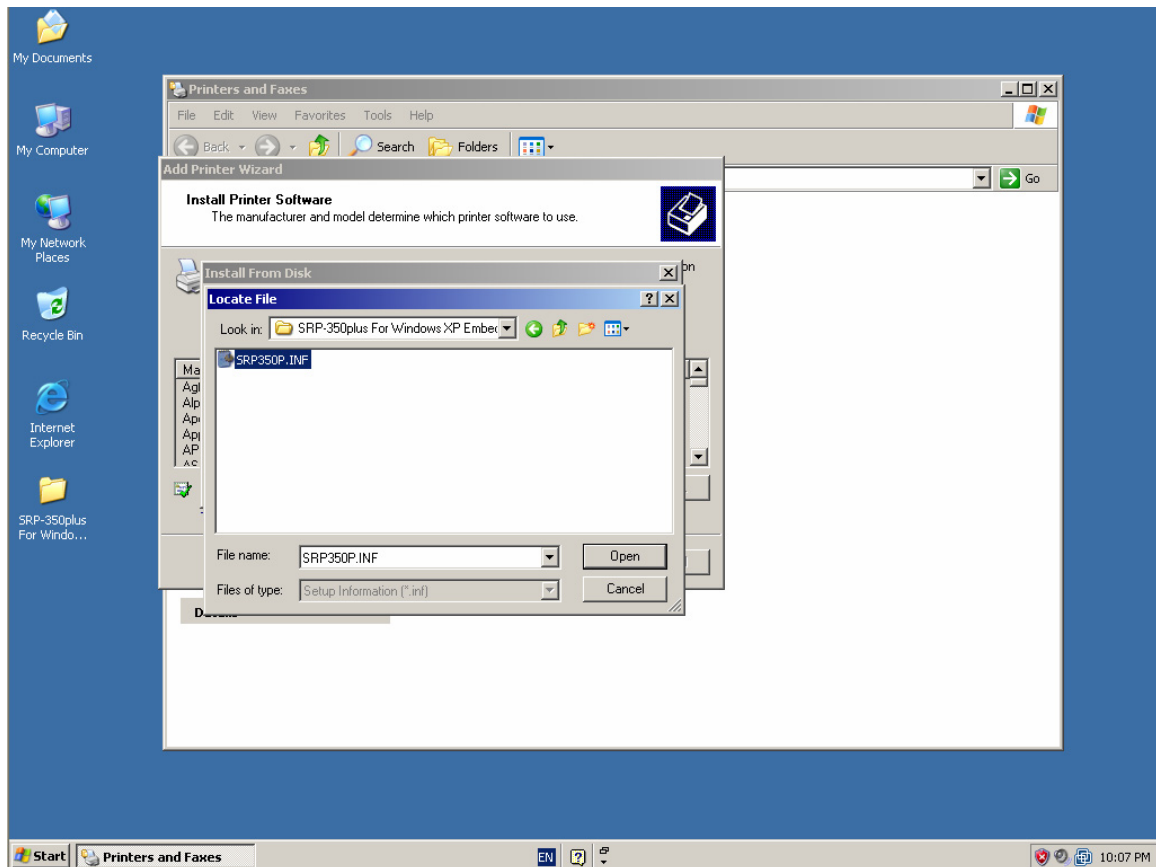
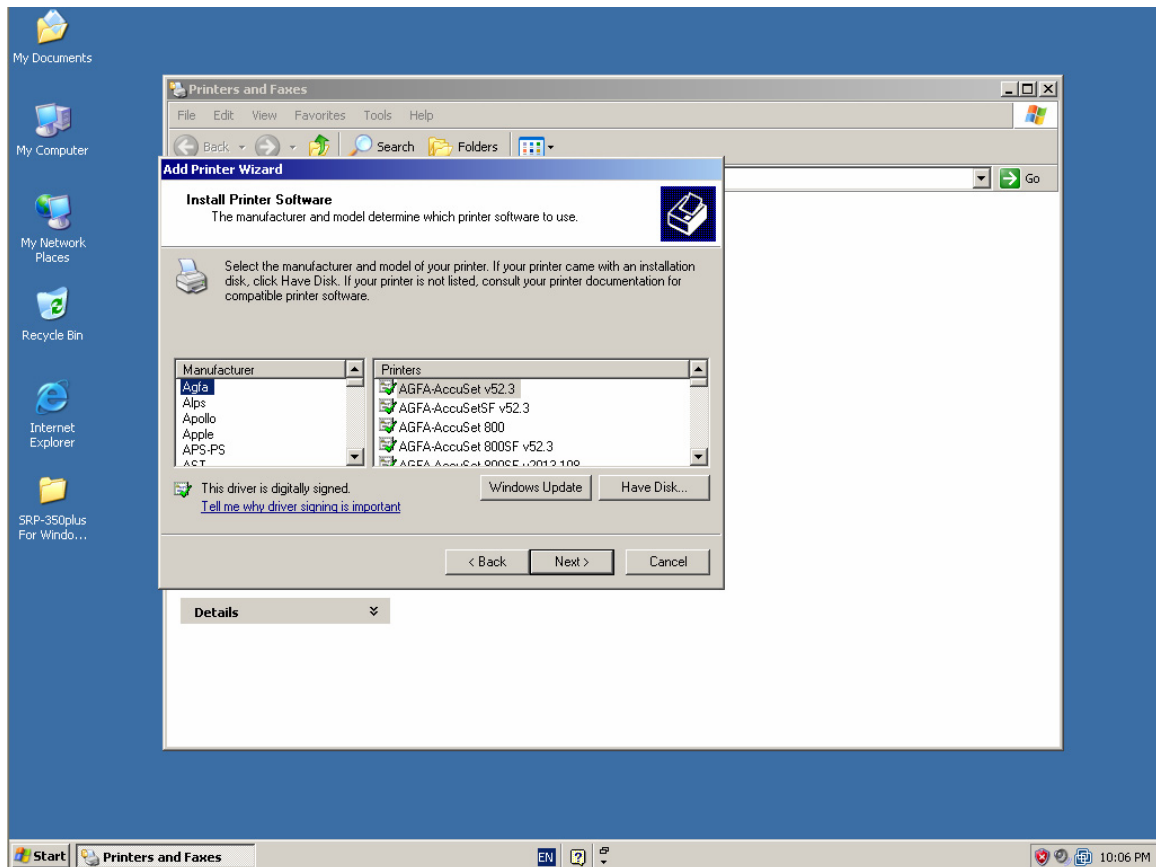
4) Select option to be used and click the “Next” button.

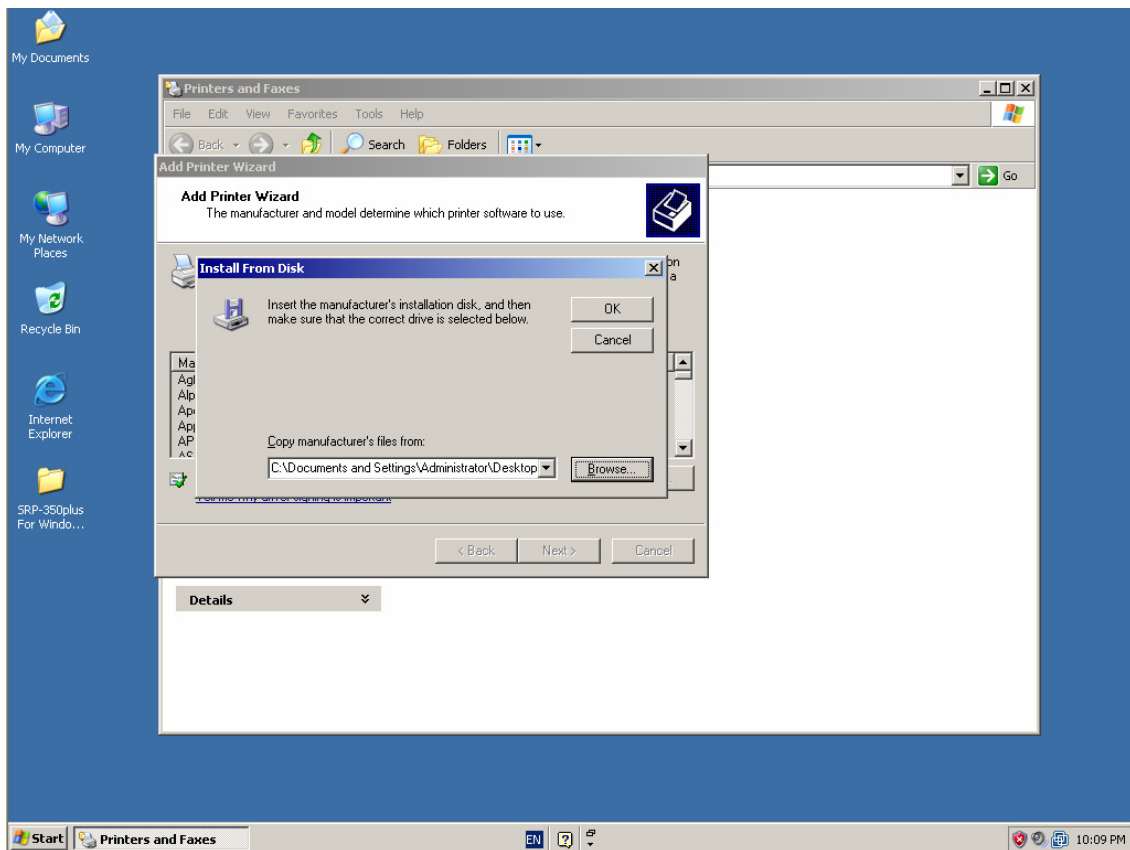


5) Select port to be used and click the “Next” button.

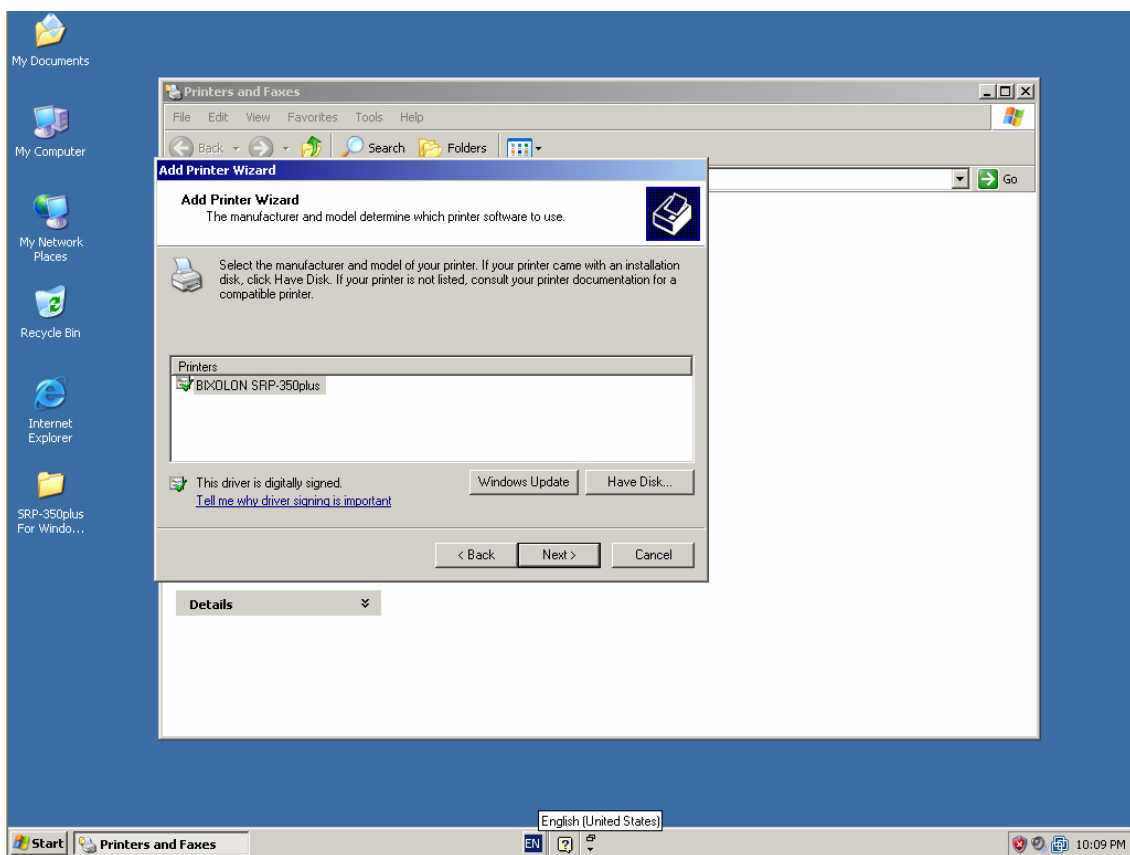


6) Select a installation disk using “Have Disk” button.

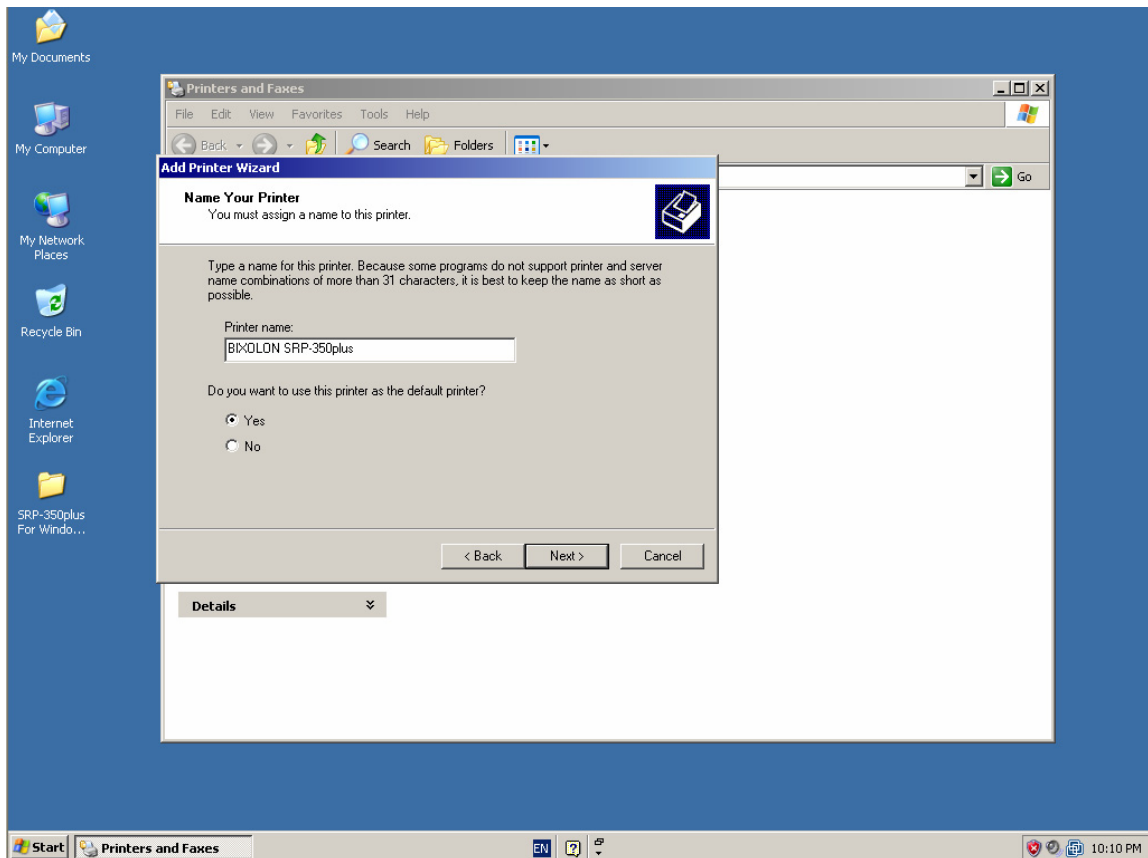




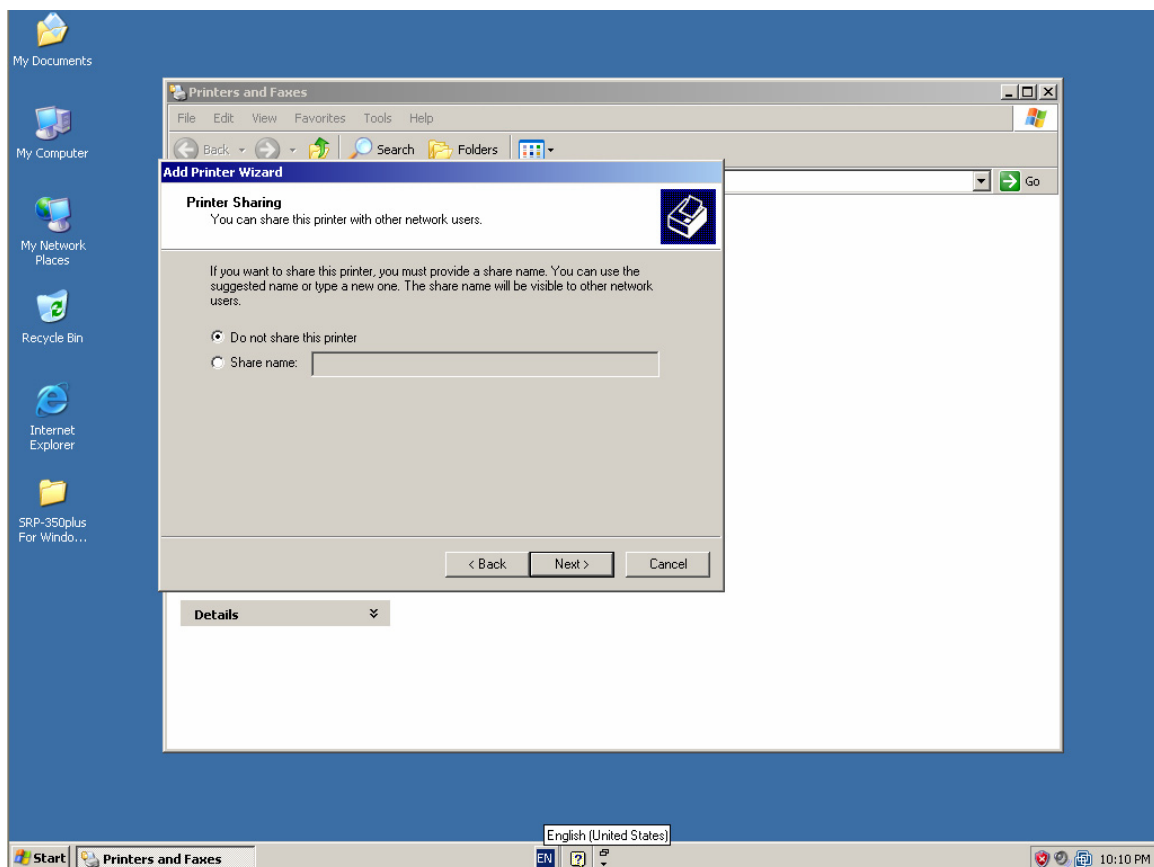
7) Click the “Next” button.



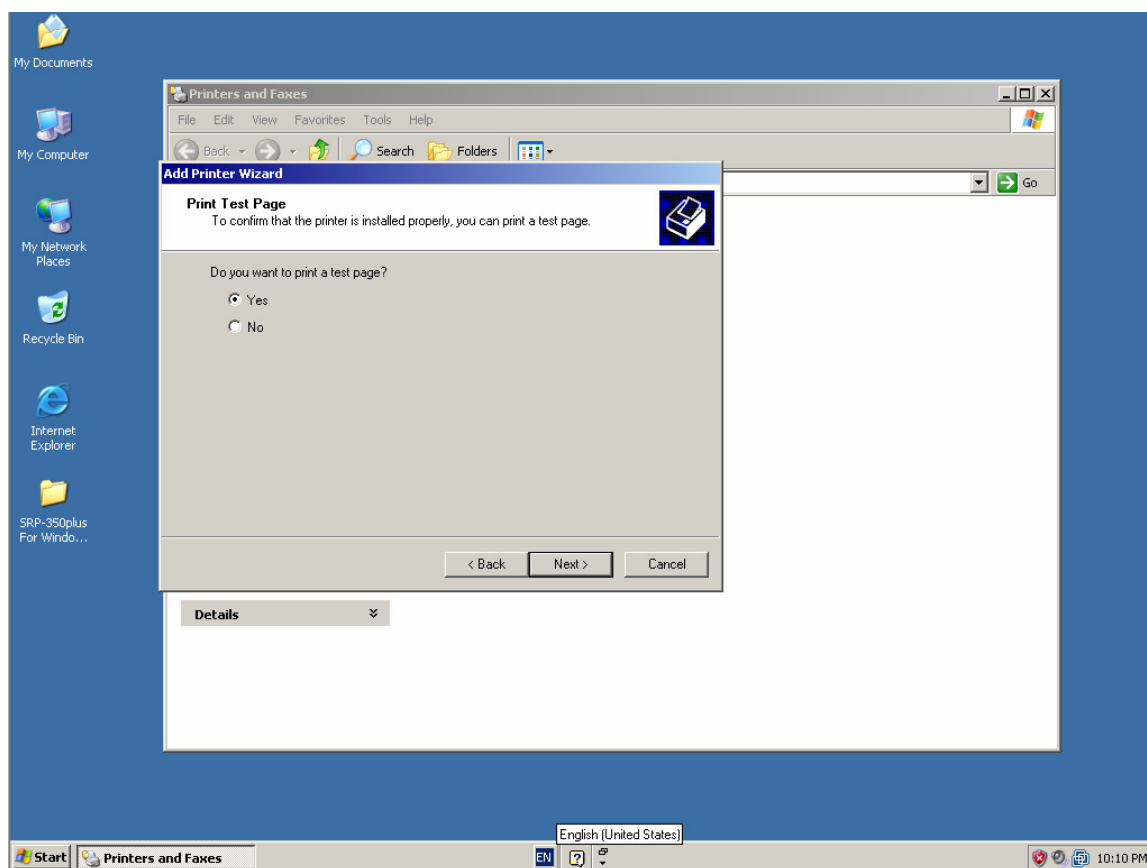
8) Select the option to be used and click the “Next” button.



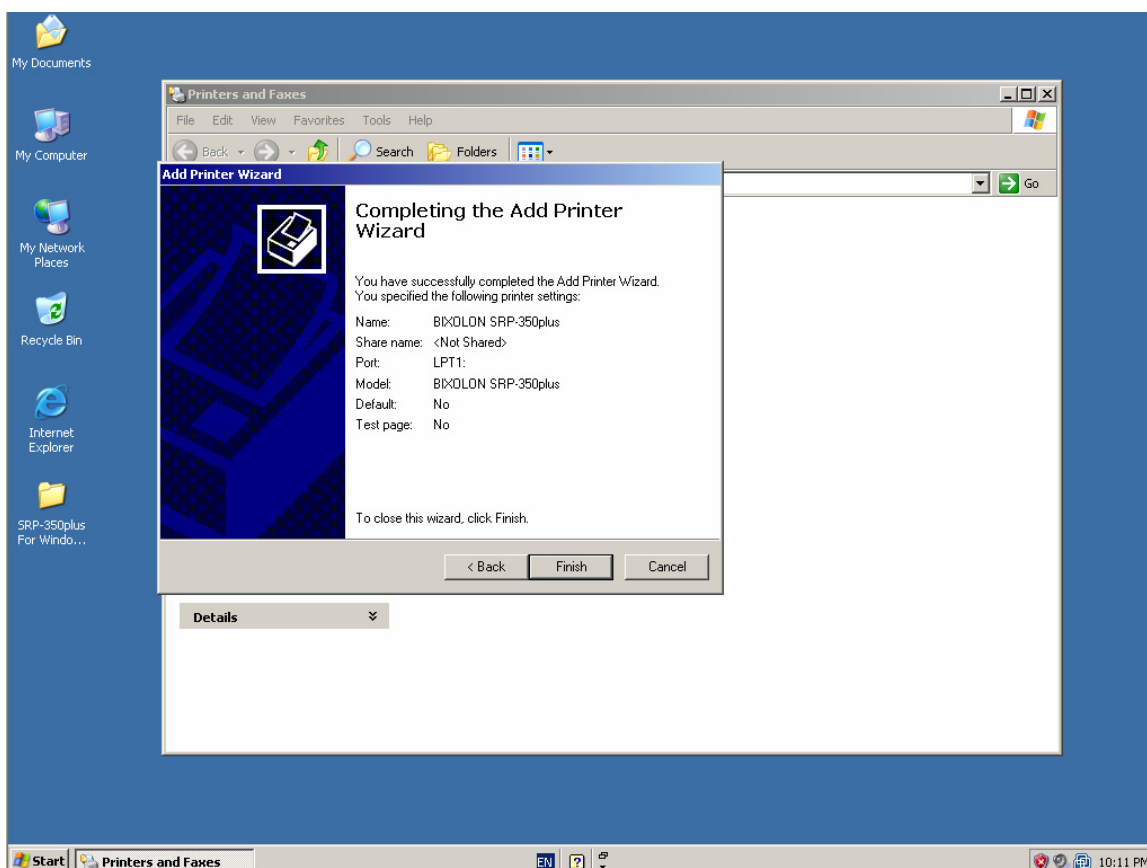
9) Click the “Next” button.



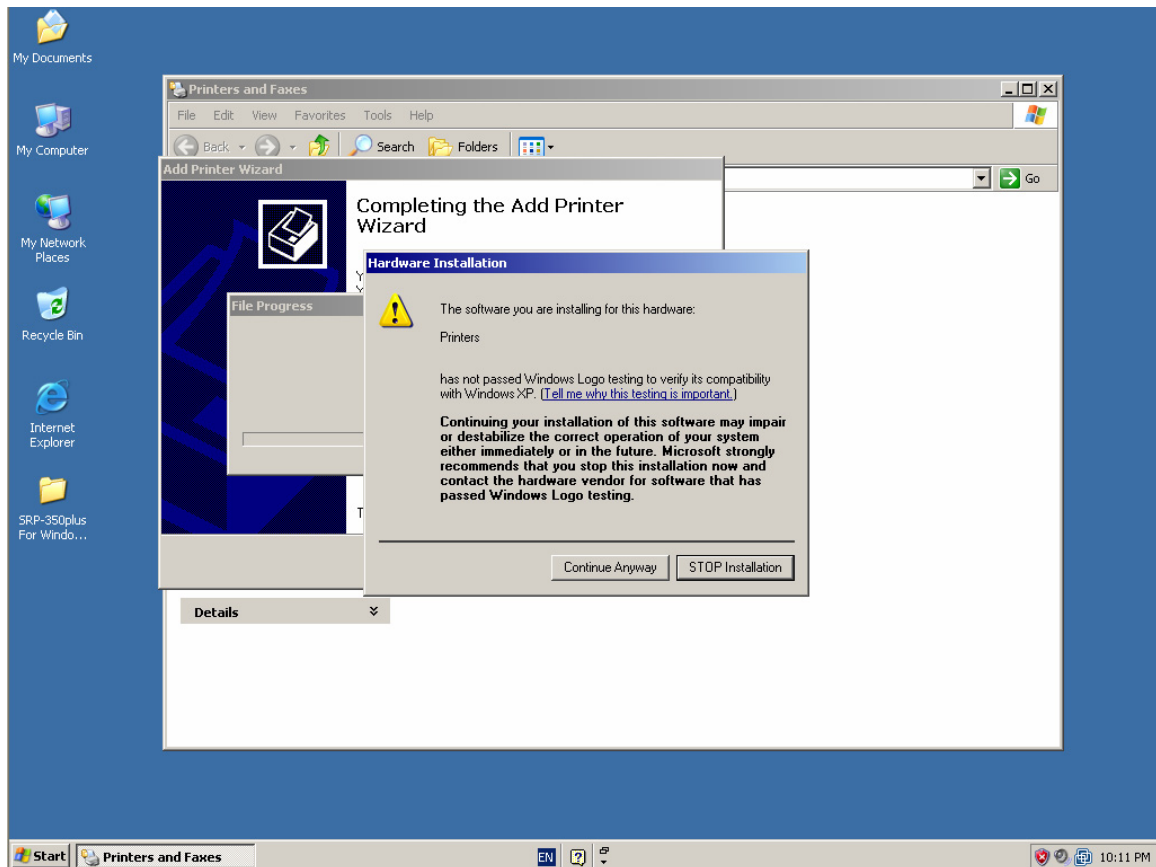
10) Select the option to be used and click the “Next” button.



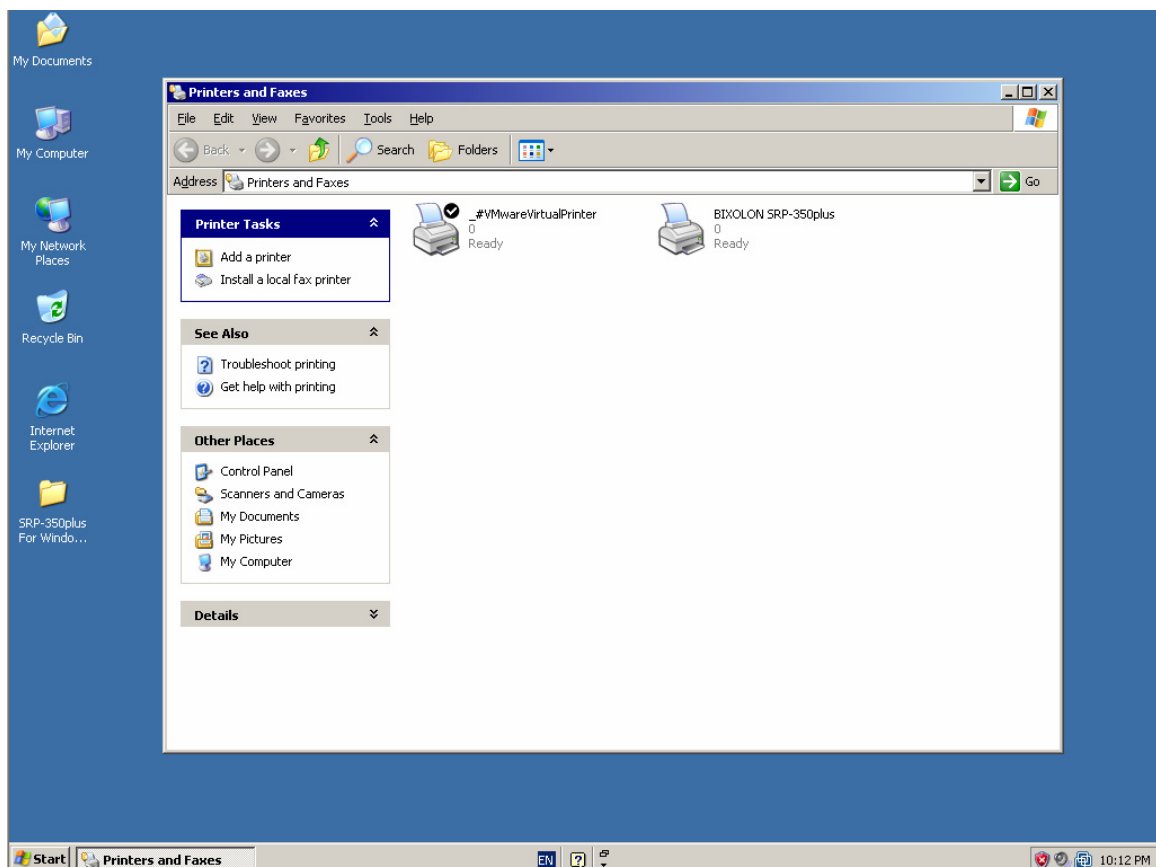
11) Click the “Finish” button.



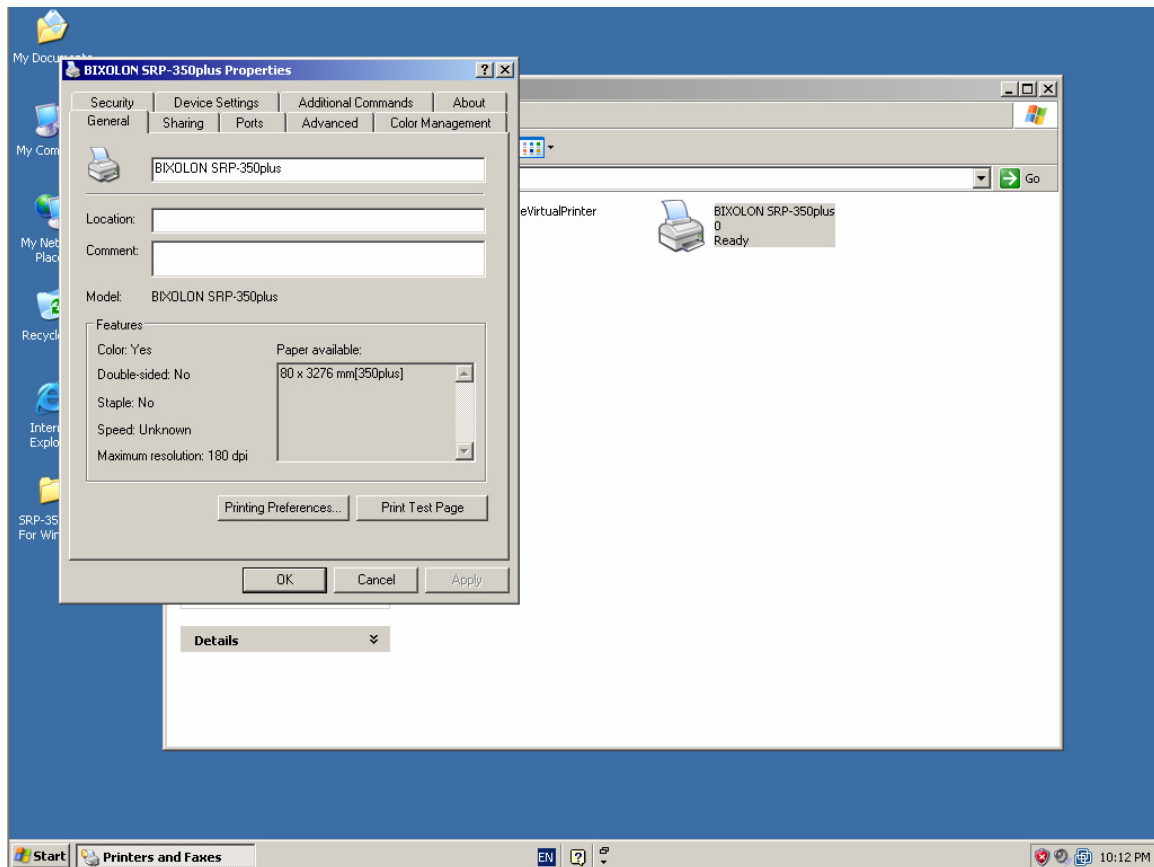
12) Click the “Continue Anyway” button.



13) Windows driver is installed.

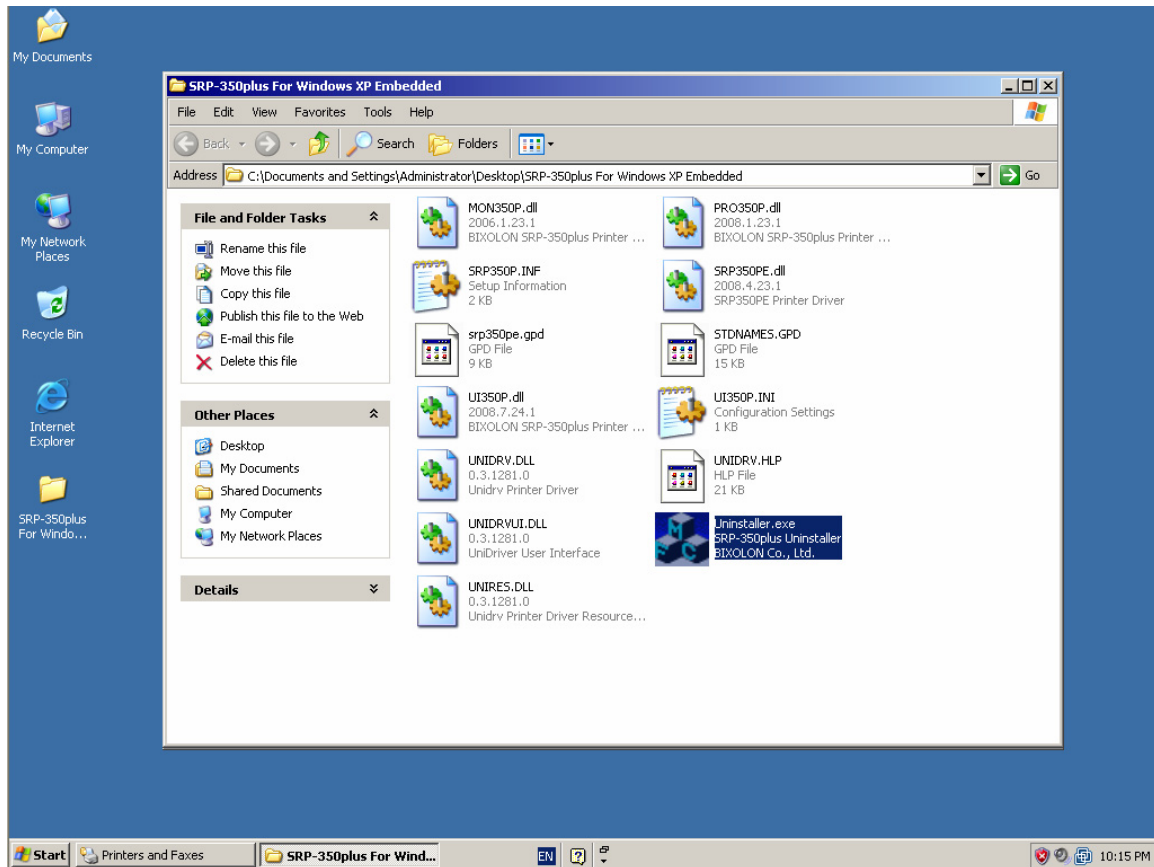


14) Click the “Print Test Page” button and check printing status.

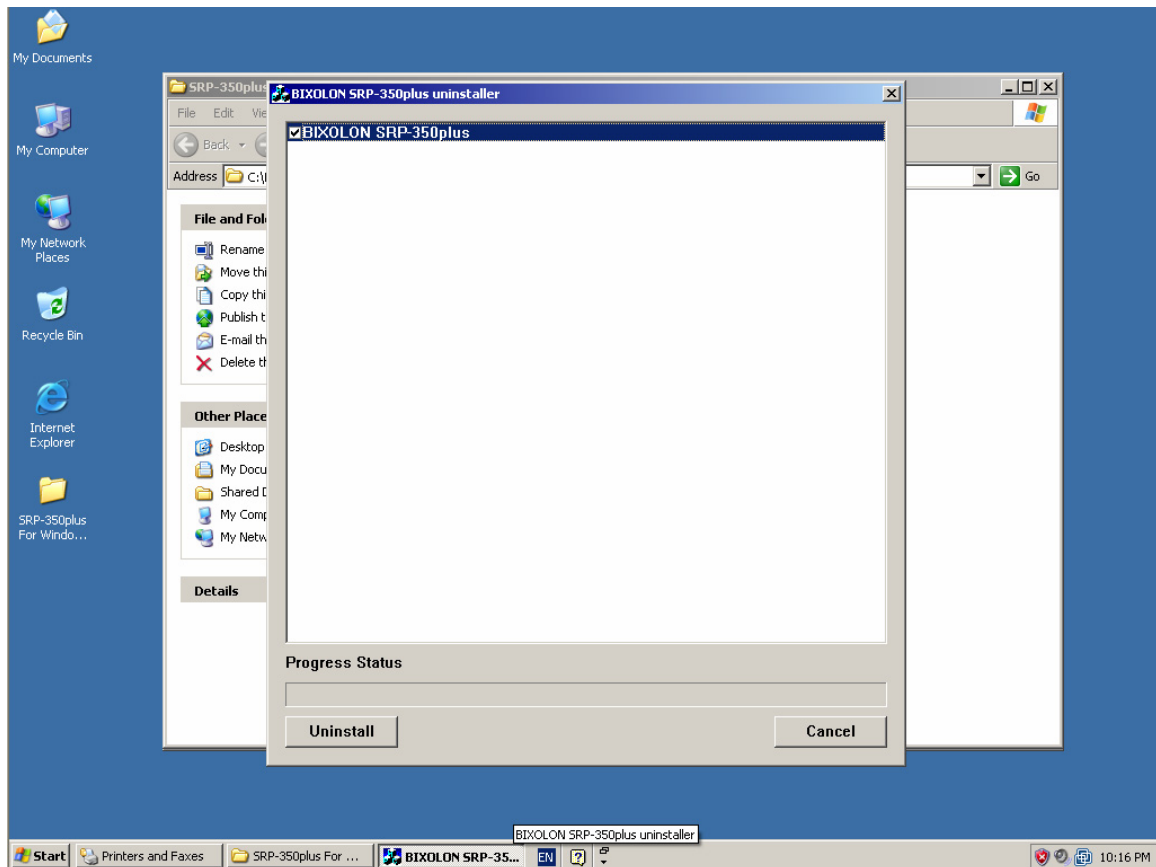


3-2 Remove

1) Double-click the Windows Driver removing file (Uninstaller.exe).



2) Select printers to remove and click the “Uninstall” button.



3) Clicking the “Yes” button will reboot the PC.

